



ARRIVE 2050

METROPOLITAN
TRANSPORTATION PLAN

WELCOME!

Thank you for joining the meeting for the
Bismarck-Mandan Arrive 2050 Metropolitan
Transportation Plan (MTP)!

November 9, 2023



*in partnership with NDDOT, FHWA, and FTA

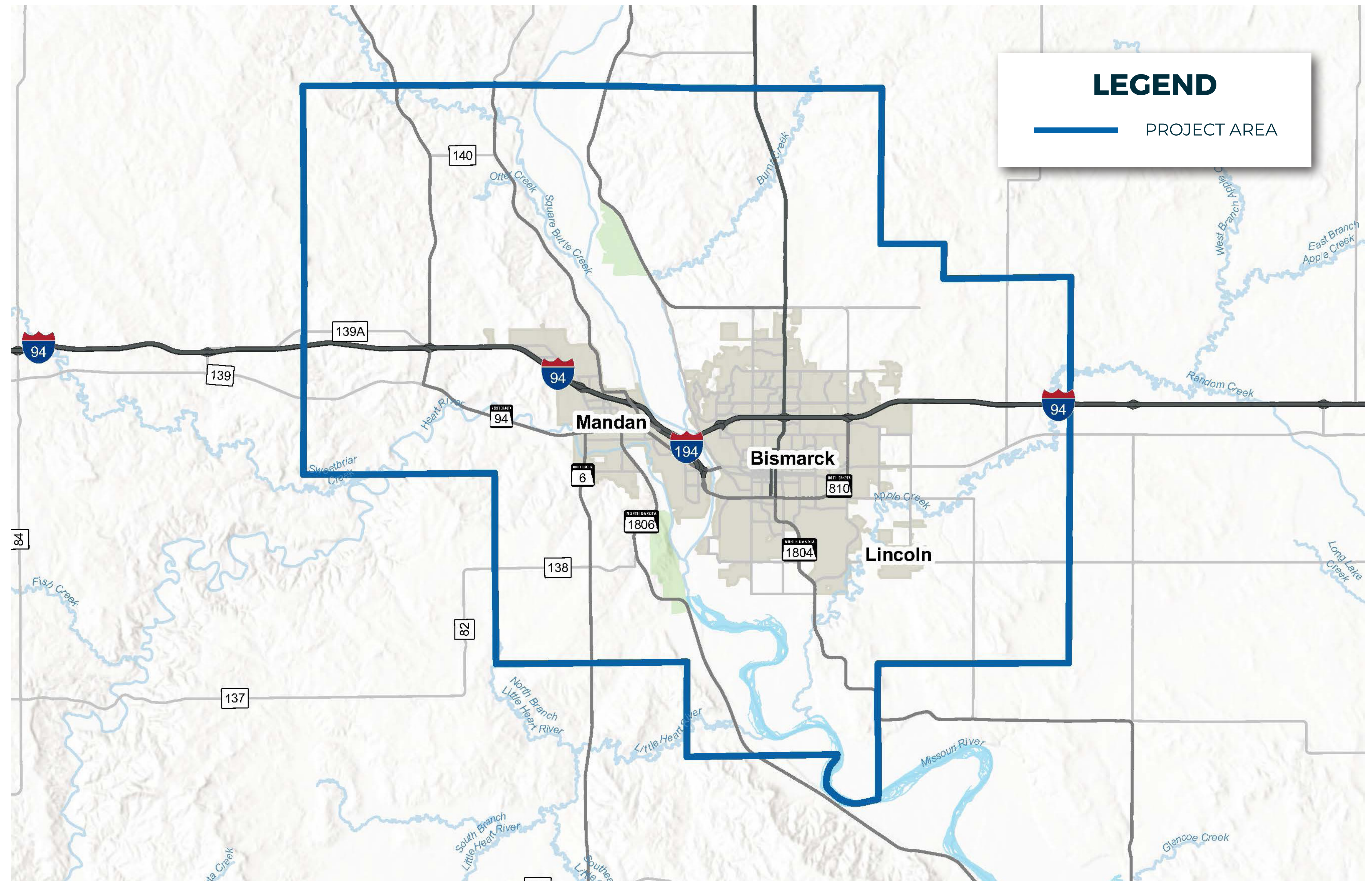


ARRIVE 2050

METROPOLITAN
TRANSPORTATION PLAN

The Metropolitan Transportation Plan (MTP) guides the development of the Bismarck-Mandan area's multimodal transportation system over the next 20+ years. The MTP is updated once every five years.

Arrive 2050 Project Background



Bismarck-Mandan
METROPOLITAN PLANNING ORGANIZATION

Bismarck

**City of
Lincoln**
North Dakota

MANDAN

Burleigh County

MORTON COUNTY
North Dakota

*in partnership with NDDOT, FHWA, and FTA



ARRIVE 2050

METROPOLITAN
TRANSPORTATION PLAN

Previous Plan (Arrive 2045)

The previous MTP was completed in 2020. At that time, the goal areas were:



Safety & Security

All transportation improvements should be developed with safety of the traveling public in mind. Security of the transportation system includes ensuring users of the transportation system are protected from natural or human disaster.



Infrastructure Condition

As our transportation system ages, maintenance of our existing system is continuously needed to ensure that the condition of all transportation components of our existing transportation system are maintained and repaired to serve our traveling public.



Congestion Reduction

Mobility and connectivity of the transportation system allows users to move from one place to another in a direct route with reduced travel times and reduced delays.



System reliability for freight movement and economic vitality

A transportation system that provides good access for all modes of transportation can promote future development and employment opportunities.



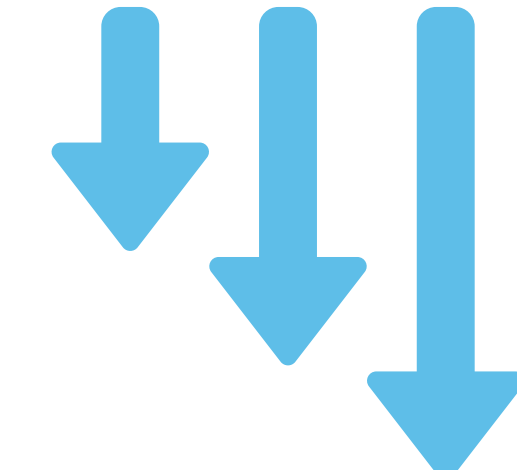
Alternative transportation modes to automobile travel

It is important to provide a well-balanced transportation system that supports modes other than a single occupancy motor vehicle.



Environmental Sustainability

Air quality is affected by mobile source emissions resulting from vehicle miles traveled (VMT). Air quality impacts can be reduced through roadway improvements that reduce VMT or provide for transportation modes other than single occupancy vehicles.



Reduced Project Delivery

The MTP will consider fiscal constraint and develop, prioritize, and program projects to ensure they are within the means of each jurisdiction's transportation budget.

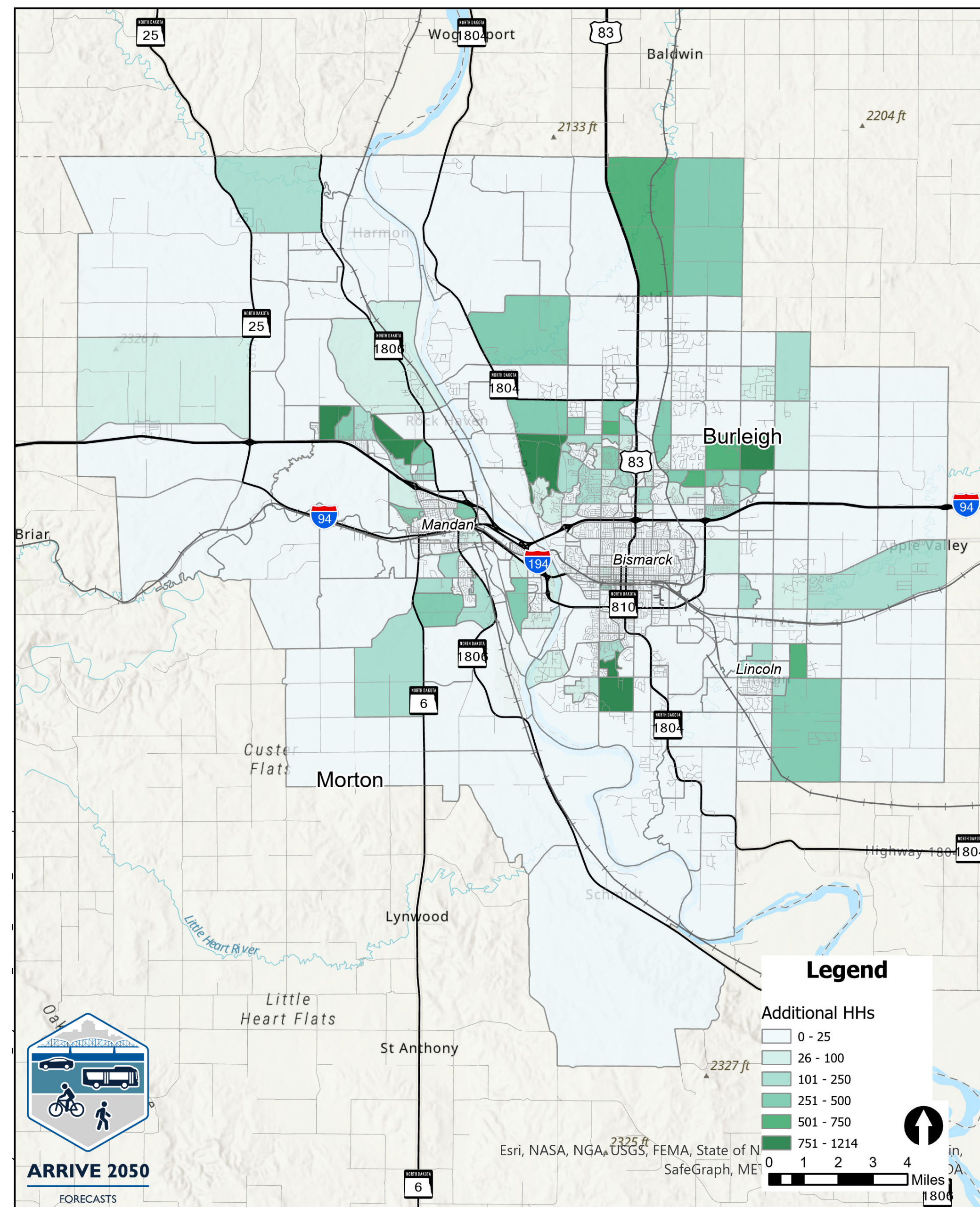


ARRIVE 2050

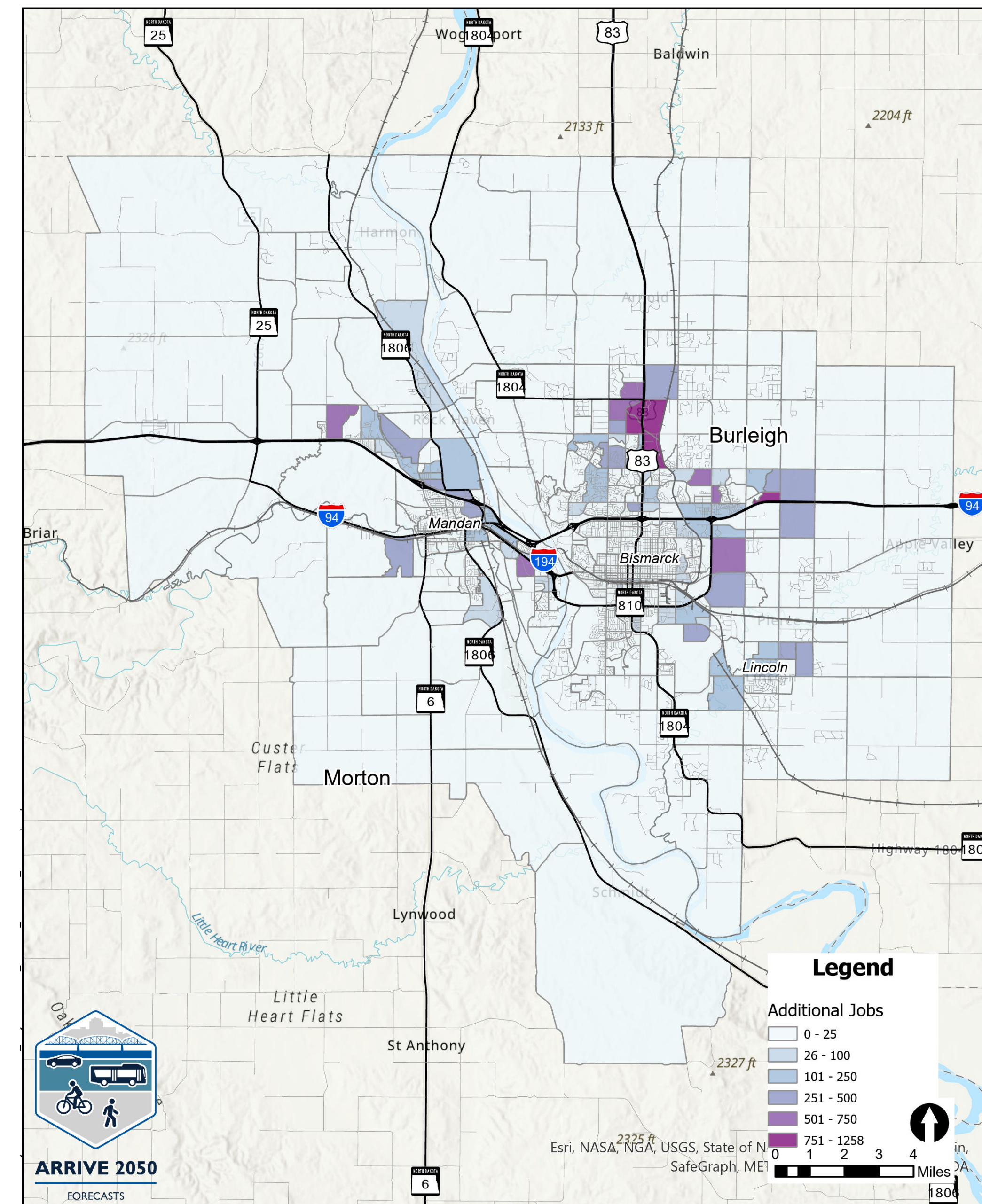
METROPOLITAN
TRANSPORTATION PLAN

Bismarck-Mandan Growth

Growth for the Bismarck and Mandan area will impact where future travel demands will be.



2021 to 2050 Household Growth



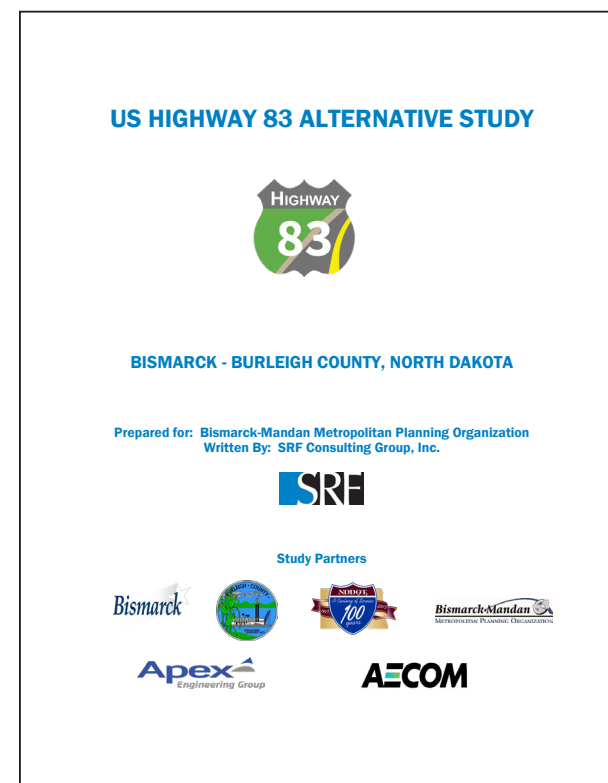
2021 to 2050 Employment Growth



ARRIVE 2050

METROPOLITAN
TRANSPORTATION PLAN

Recent Studies



US Highway 83 Alternative Study

Completed in July of 2019. The key study outcome was the identification of viable highway alternatives along US Highway 83 north of Bismarck to best serve existing and future stakeholders within the region, while also analyzing potential new routes for regional traffic.



Bismarck-Mandan Bicycle + Pedestrian Plan

Completed in December of 2017 this bicycle and pedestrian plan was created to support and grow engineering, education, encouragement, enforcement, and evaluation efforts to continue to advance bicycling and walking as safe, comfortable, and reliable modes of transportation in Bismarck-Mandan.



Mandan-Bismarck Corridor Improvement Study

Completed in August 2016 the Mandan-Bismarck Corridor Improvement Study looked at 20 corridors to improve traffic operations and reduce crashes along the corridors.



Burleigh County Land Use Plan

Completed in April 2016 the Burleigh Land Use Plan was focused on the physical form of the Planning Area through 2040.



Bismarck-Mandan Regional Freight Study

Completed in December 2018 the purpose of the Bismarck-Mandan Regional Freight Study was to find the most used freight routes, detail the first and last mile of freight movement as well as freight movement through the region, and determine the need for investing in the local infrastructure to facilitate efficient and effective freight movement.



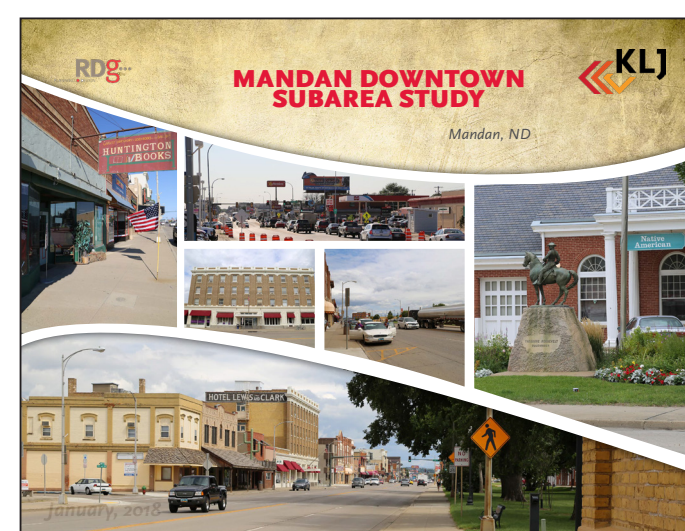
Bismarck-Mandan School Safety Crossing Study

Completed in November of 2017 both Mandan and Bismarck school districts partnered with the MPO and others to assess the pedestrian and bike improvements needed to keep students going to school safe.



East Main Avenue Corridor Study

This Study documents existing conditions along East Main Avenue and identifies strategies to ensure safety, mobility, and access for all future users in the area.



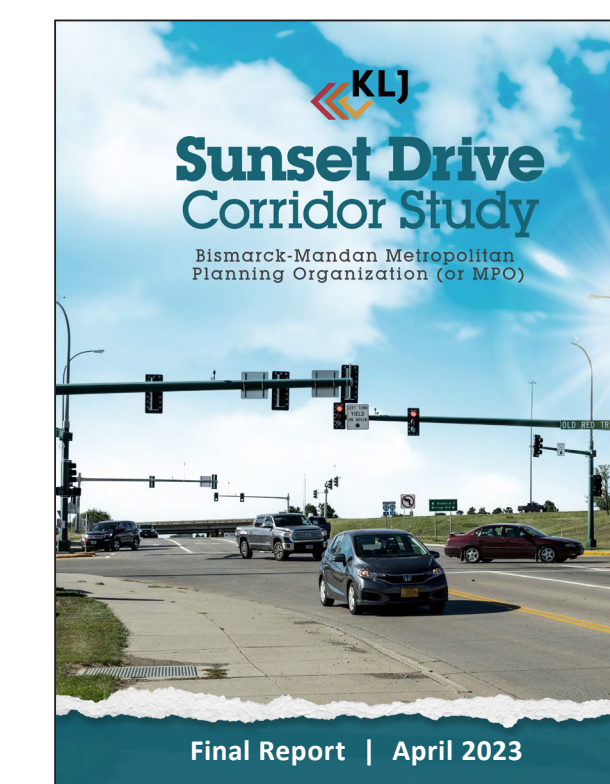
Mandan Downtown Subarea Study

Completed in January 2018 the Mandan Downtown Subarea Study looked at future growth and needs for the Mandan downtown area.



Northeast Morton County Future Land Use Plan

Completed in November 2016 The purpose of the future land use plan was to serve as the basis for the county's zoning decisions. The land use plan provides a blueprint for implementing growth and land use goals and objectives to current citizens, property owners, prospective citizens, developers, and buyers.



Sunset Drive Corridor Study

This study addresses the expanding needs of Sunset Drive due to population growth and the aging infrastructure by planning alternatives to guide future development and redevelopment of the corridor to better serve the needs of all users.



ARRIVE 2050

METROPOLITAN
TRANSPORTATION PLAN

2023 Draft Transit Development Plan Findings & Recommendations

TRANSIT OFFERINGS

Fixed Route

- Bismarck
- Mandan

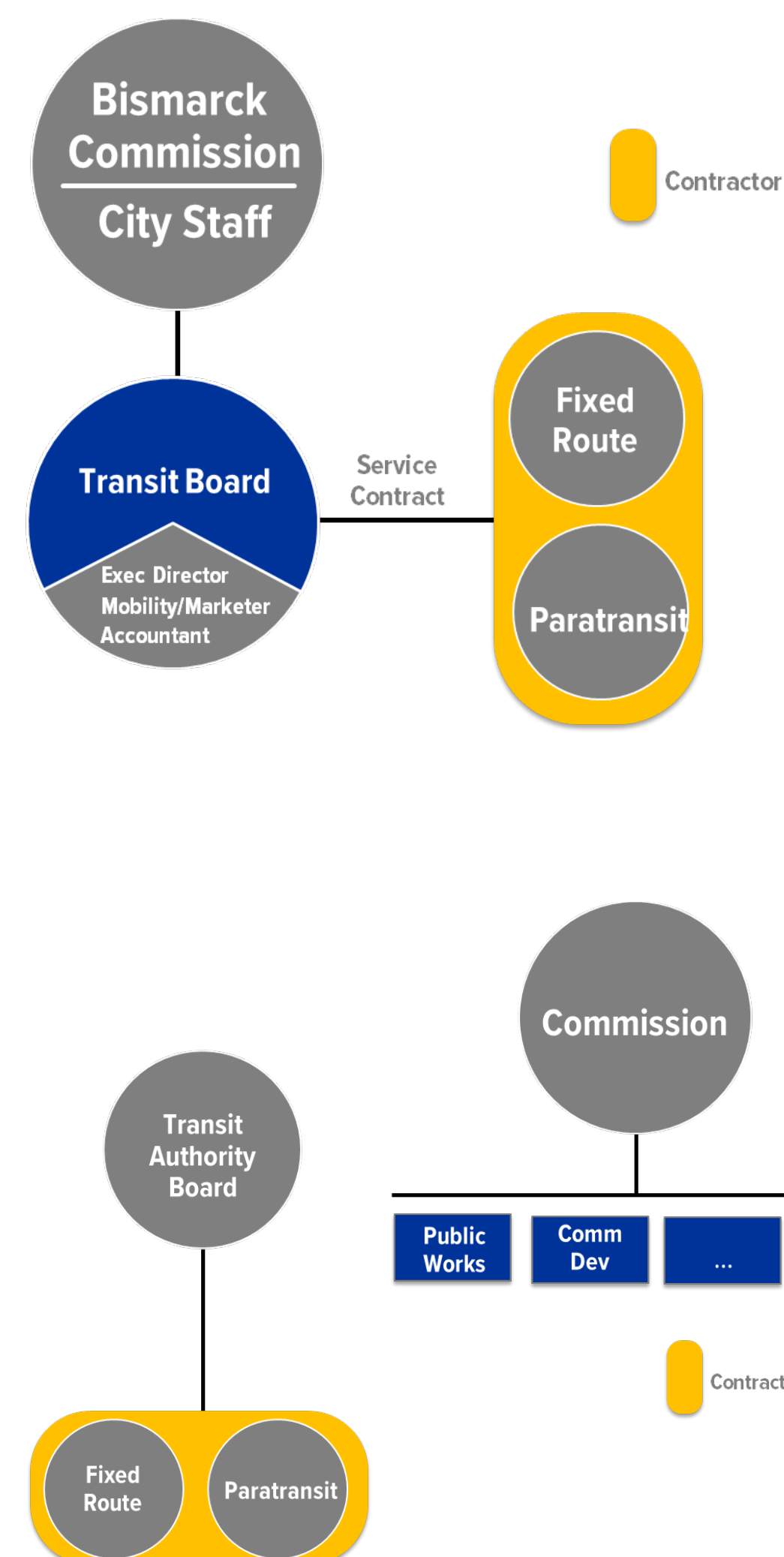
Paratransit

- Bismarck
- Mandan

Non-ADA Demand Response

- Bismarck
- Mandan
- Lincoln

ORGANIZATIONAL STRUCTURE



Current:

The Bismarck City Commission is the ultimate decision-making body with a Transit Board that serves in an advisory capacity

Recommended:

Transit is a stand-alone agency, with elected/appointed board with more authority. Each interested jurisdiction has a seat. This requires action by the State legislature.

THE FISCAL CHALLENGE



Issue at present is that budget issues of the past have not been resolved—costs exceed revenue. In

the future, if no action is taken, operating funds will be exhausted by 2026.

Addressing the Challenge:

Reduces service level

OR

Funding Increase Options:

Property Tax Levy has Capacity:

Not much appetite to increase

Sales Tax Levy:

Modest levy generates substantial revenue. Not Available until 2029



ARRIVE 2050

METROPOLITAN
TRANSPORTATION PLAN

Potential Arrive 2050 Goals

Goal areas are based on the MPO's current MTP including current federal guidelines/legislation around transportation planning and metropolitan transportation planning. Upon completion of the new MTP goals will reflect the vision of Bismarck-Mandan MPO's transportation system. Built through public and stakeholder input, goal areas will shape policy affecting the transportation system, and will help guide the evaluation of transportation projects, especially those funded through MPO's metropolitan transportation planning process.



Accessibility

Focusing on connecting people and where they live to goods, services, and jobs with multiple options for how to travel safely.



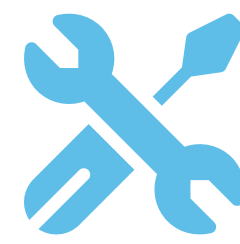
Innovative

Incorporating emerging trends and technologies into the transportation system. This includes innovative infrastructure deployment (such as for electric vehicles or autonomous travel), using new mobility options, and utilizing new data sources to make more informed decisions.



Active Transportation

Providing enhanced infrastructure and connections for pedestrians, bicyclists, and other modes of active transportation; potentially including more trails and shared-use paths, enhanced pedestrian street crossings, and streets that better accommodate modes other than vehicles.



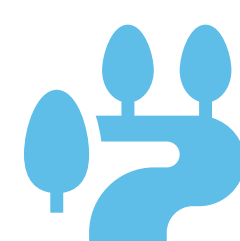
Maintenance

Maintaining roadway pavement and bridges in a state of good repair.



Economic

Focusing on transportation that supports and promotes the economic vitality of the Bismarck-Mandan area by keeping people and goods moving. This goal also places an emphasis on ways to complete roadway construction projects more quickly, saving time and money.



Placemaking

Integrating the transportation system with land use to provide transportation facilities that fit with and support their surrounding neighborhoods and community goals.



Efficiency and Reliability

Providing for the efficient and reliable movement of people, services, and goods; focusing on predictable travel times and limiting recurring congestion.



Safety

Reducing the risk of traffic crashes and harm to all users of our transportation system regardless of travel mode.



Equity

Improving transportation infrastructure so that all have equal access to affordable and reliable transportation options; includes consideration of how transportation impacts and benefits all members of the community regardless of income, race, age, or disability status.



Sustainability

Considering the impacts of transportation to the built and natural environment, including pollution reduction, and providing a transportation system that is resilient and adaptable to severe weather, major economic changes, and other shocks.



ARRIVE 2050

METROPOLITAN
TRANSPORTATION PLAN

Current Plan

Arrive 2050 Goals

The project team is defining the top goals for this update to the plan.
Please select the goals that you think should be included *(up to five).*

ACCESSIBILITY

**ACTIVE
TRANSPORTATION**

ECONOMIC

**EFFICIENCY AND
RELIABILITY**

EQUITY

INNOVATIVE

MAINTENANCE

PLACEMAKING

SAFETY

SUSTAINABILITY

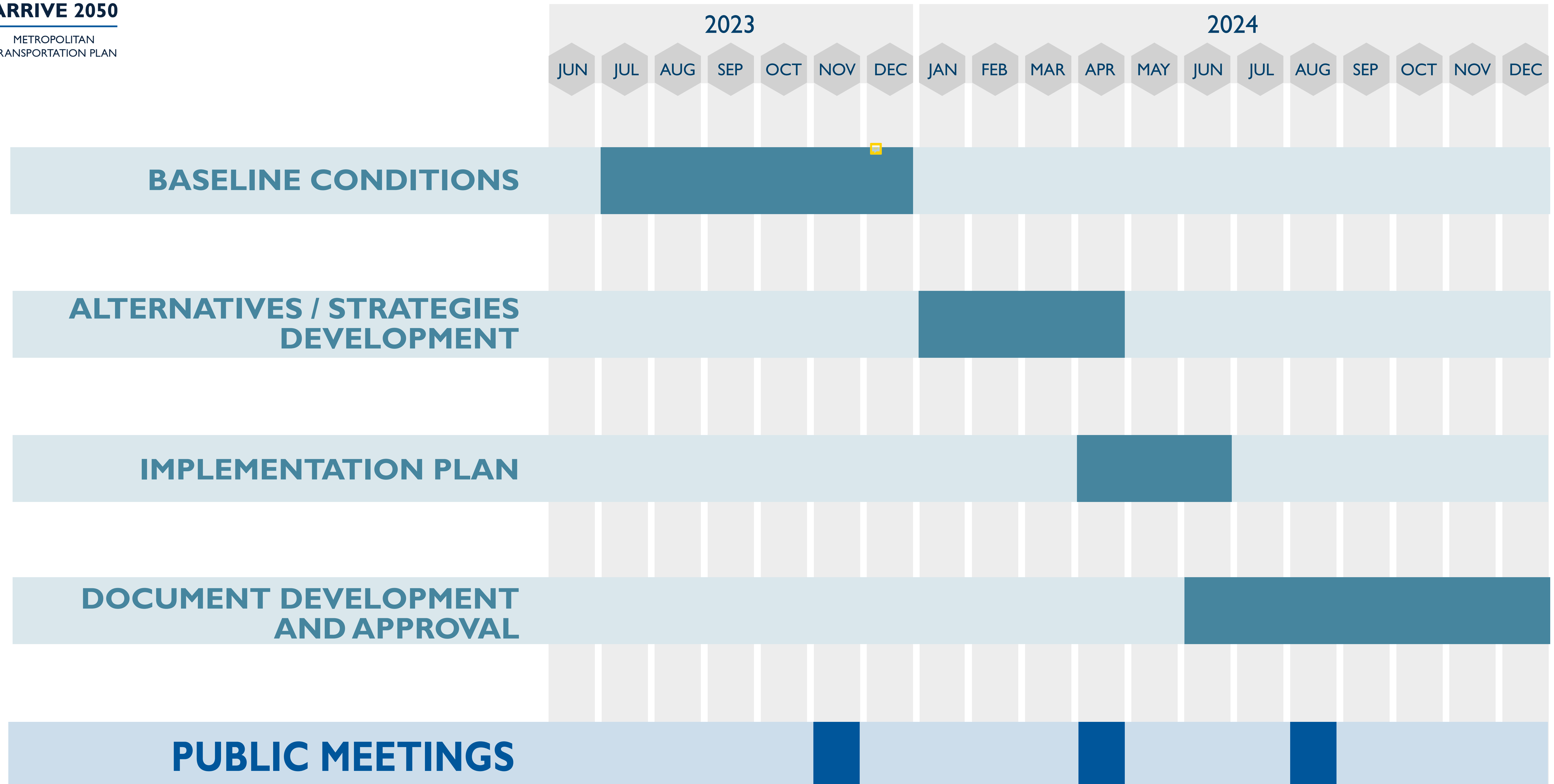


ARRIVE 2050

METROPOLITAN
TRANSPORTATION PLAN

Next Steps

Scan the QR code to visit
the project website!



*in partnership with NDDOT, FHWA, and FTA